



## MASTER OF SCIENCE IN NURSING NEONATAL NURSE PRACTITIONER



### Nurturing Life from the First Breath

Combining advanced knowledge in nursing theory, health care policy, ethics and leadership with intensive courses reflecting the unique learning needs of the Neonatal Nursing Practitioner (NNP), Regis University's prestigious program prepares you for the unique challenges of the neonatal field. Courses include clinical management of the high-risk newborn as well as diagnostic and therapeutic procedures.

#### QUICK FACTS

- Flexible:** Program can be completed in 5 semesters
- Convenient:** Adult graduate programs designed to fit your schedule
- Relevant:** Gain skills in advanced clinical assessment and diagnosis, NICU competence and more
- Networking:** Enjoy access to exclusive industry connections, partnerships and memberships
- Scholar Practitioner Model:** Expert faculty with years of professional experience

#### PROGRAM FORMATS

- Online:** Virtual classroom once per week from 8 a.m.-5 p.m.
- Start Dates:** August
- Total Credit Hours:** 43

**\$129,480**

**National median salary for nurse practitioners<sup>1</sup>**

**40%**

**Growth in nurse practitioner roles through 2033<sup>1</sup>**



**Accredited by the Commission on Collegiate Nursing Education (CCNE)**

<sup>1</sup>U.S. Bureau of Labor Statistics, nurse practitioner, 2023

### Awards

- #1 Best Nursing Schools in Colorado**  
collegefactual.com, 2023
- #2 Best Master's in Neonatal Nursing Programs**  
bestcolleges.com, 2023
- #2 Best Colleges for Nursing in Colorado**  
niche.com, 2023
- #2 Best Nursing Practice Schools in the Rocky Mountains Region**  
collegefactual.com, 2023



#### CLINICAL ROTATIONS AND ON-CAMPUS EXPERIENCES

Clinical experiences are covered over 3 semesters. The first rotation is in the second semester of the first year. Clinical experiences are completed in Level III/IV NICUs, with two on-campus intensive simulation and skills experiences.

## Degree Plan

### SEMESTER 1

Fall

12 credit hours

NR 600 Theoretical Frameworks

NR 602 Research in Nursing

NR 653 Genetics and Embryology for the NNP

HCE 604 Ethics for Nurse Leaders

### SEMESTER 2

Spring

9 credit hours

NR 652 Advanced Health Assessment for the NNP

Completion of 105 clinical hours

NR 654 Advanced Procedures for the High-Risk Neonate

NR 708 Health Care Policy

### SEMESTER 3

Summer

6 credit hours

NR 605N Pathophysiology for Advanced Practice

NR 607N Pharmacology for Advanced Practice

### SEMESTER 4

Fall

8 credit hours

NR 655 Care of the Child from 0-2

NR 656 Clinical Management of the High-Risk Infant

Completion of 105 clinical hours

### SEMESTER 5

Spring

8 credit hours

NR 651 Professional Integration

NR 657 Clinical Integration Practicum for the NNP

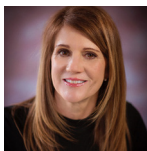
NR 699 Comprehensive Evaluation

Completion of 420 clinical hours

**TOTAL: 43 CREDIT HOURS**



**SCAN CODE TO SEE FULL PROGRAM CURRICULUM  
AND ACADEMIC REQUIREMENTS**



*"I was happy to see that Regis has a set of core values and those helped me to define what my core values are. I think they're essential to nursing practice."*

– Carol Herczeg, RHCHP '08, Neonatal Nurse Practitioner

## Eligibility

- Two Years of clinical practice as an RN in a Level III or Level IV NICU required
- Nursing bachelor's degree from a NLN or AACN-CCNE accredited program
- Minimum undergraduate GPA of 2.75 or higher, with a grade of "C" or better in all nursing courses
- Completion of a statistics course with a grade of C or better (must be taken prior to NR 602)
- Active RN license
- Current AHA Basic Life Support (BLS) certification

## Ready to Apply?

### GAIN IN-DEMAND SKILLS

- Advanced health assessment
- Diagnostic and clinical decision-making
- NICU competency
- Respiratory management
- Cardiovascular care

### APPLICATION REQUIREMENTS:

To apply directly to the NNP program, you will need:

- Completed online application through NursingCAS
- All transcripts from all institutions attended sent directly to NursingCAS
- Three professional letters of recommendation from a NNP/ Neonatologist and a colleague
- Resume and essay
- Admissions interview may be required

### TUITION AND FINANCIAL AID

For cost of attendance, please visit [regis.edu/cost](http://regis.edu/cost). For questions, please contact our financial aid office at **800.568.8932** and [rufinancialaid@regis.edu](mailto:rufinancialaid@regis.edu)

## Get Started

### Questions?

Our admissions team can help you choose the program that fits your goals, find options that save time and money, and help you through your online application.

### Contact

[ruadmissions@regis.edu](mailto:ruadmissions@regis.edu)  
800.944.7667

### Apply Today [nursingcas.org](http://nursingcas.org)

